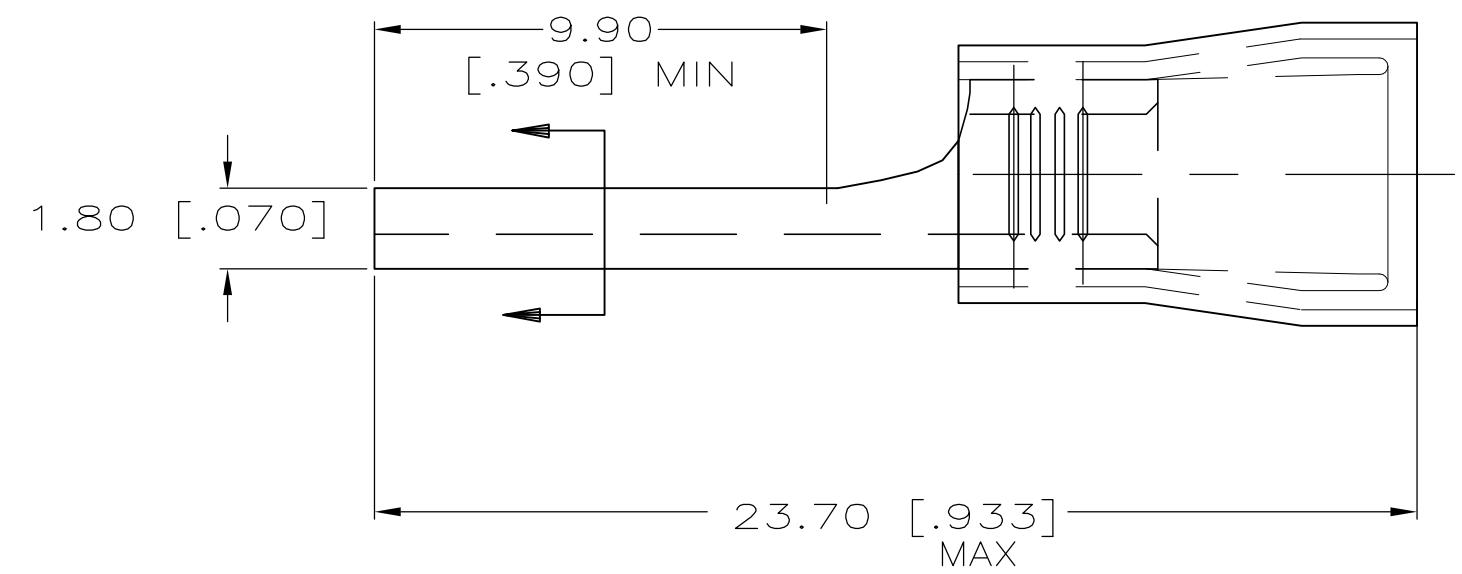
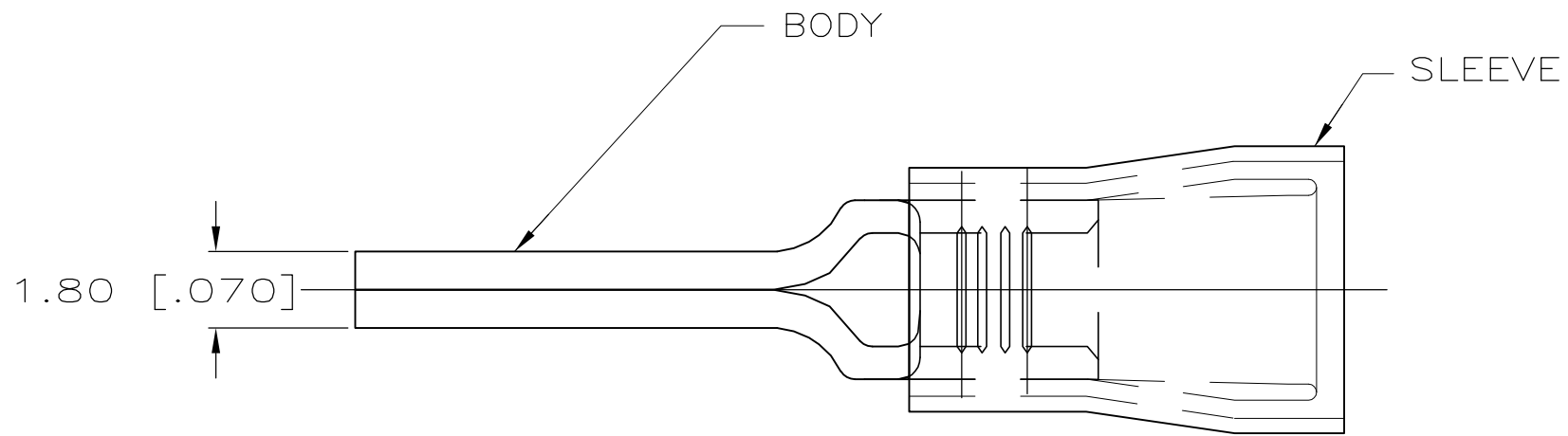


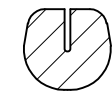
THIS DRAWING IS UNPUBLISHED. RELEASED FOR PUBLICATION
 © COPYRIGHT BY TYCO ELECTRONICS CORPORATION. ALL RIGHTS RESERVED.

| LOC | DIST | REVISIONS | | | | | |
|-----|------|-----------|-----|-----------------------|---------|-----|------|
| G | 14 | P | LTR | DESCRIPTION | DATE | DWN | APVD |
| | | F | | REV PER ECR 07-023647 | 12OCT07 | JR | TM |



| | |
|--------------------------|--------------------------|
| AMP WIRE RANGE | RU FILE E13288 |
| 16-14 AWG STRANDED | 16-14 AWG STRANDED |

- 1 WIRE INSULATION DIA.
2.92-4.32 [.115-.170] DIA.
- 2 MATERIAL: BODY - CU PER ASTM B152
SLEEVE - CU PER ASTM B152
INSULATION - NYLON
- 3 FINISH: BODY - TIN PL. PER ASTM B545
SLEEVE - TIN PL. PER ASTM B545
INSULATION - COLOR - BLUE
- 4 LOOSE PIECE P/N 165172



| | | |
|------|--------------|----------|
| 4000 | ON TAPE | 696274-2 |
| QTY | PACKAGE TYPE | PART NO |

| | |
|---|--|
| AMP INCORPORATED CUSTOMER SERVICE SYSTEMS | |
| FOR ADDITIONAL PRODUCT INFORMATION OR COPIES OF DRAWINGS AND TECHNICAL DOCUMENTS | PRODUCT INFORMATION CENTER 1-800-522-6752 |
| FOR APPLICATION TOOLING INFORMATION | TOOLING ASSISTANCE CENTER 1-800-722-1111 |
| FOR ORDER ENTRY | 1-800-526-5142 |

| |
|--|
| MAX RECOMMENDED OPERATING TEMPERATURE: 105°C [221° F] |
| VOLTAGE RATING: 300V MAX |
| CIRCULAR MIL AREA: 1.0-2.6mm ² [1,974-5,131] STRANDED |

| | |
|--|---|
| THIS DRAWING IS A CONTROLLED DOCUMENT. | |
| DIMENSIONS: mm [INCHES] | TOLERANCES UNLESS OTHERWISE SPECIFIED: |
| | 0 PLC ± - |
| | 1 PLC ± - |
| | 2 PLC ± 0.20 [.008] |
| | 3 PLC ± - |
| | 4 PLC ± - |
| | ANGLES ± - |
| MATERIAL | FINISH |
| - 2 | - 3 |

| | | |
|----------------------------------|---|------------------------|
| DWN JR RUTH 01DEC00 | Tyco Electronics Corporation Harrisburg, PA 17105-3608 | |
| CHK T MICHIELUTTI 01DEC00 | NAME TERMINAL, WIRE PIN, PIDG WIRE SIZE, 16-14 AWG | |
| APVD T MICHIELUTTI 01DEC00 | PRODUCT SPEC | |
| | APPLICATION SPEC | |
| | WEIGHT | |
| | CUSTOMER DRAWING | |
| SIZE A3 | CAGE CODE 00779 | DRAWING NO G-696274 |
| RESTRICTED TO | SCALE 6:1 | SHEET 1 OF 1 |
| | REV F | |